



PATIENTS WITH TAVI INDICATIONS Mauritius - Indian Ocean

The University Hospital of La Reunion assists you in the management of your patients with transcatheter aortic valve implantation (TAVI) indications.



The Cardiology Department of the University Hospital of La Reunion, Felix-Guyon site in Saint-Denis, offers excellent care, particularly for minimally invasive structural procedures (percutaneous, often femoral) such as TAVI.

The Cardiology Department has a procedure for processing requests for treatment for Mauritian patients wishing to be treated in Reunion Island for scheduled and non-urgent care in the context of a TAVI indication.



Detailed procedure

The patient or the referring cardiologist sends the medical record directly to the referring physician's secure messaging system.

The doctor undertakes to quickly issue an opinion on the possibility of medical care.

The hospital administration then sends an estimate including the costs of medical care.

The system has been developed with the aim of minimizing health care costs for foreign patients (limited duration of hospitalization, outpatient examinations etc.).

The acceptance of the quotation by the patient is accompanied by a prepayment of the totality of the quotation to the hospital's finance department.

Once payment is confirmed, the patient will be given a date of hospitalization so that the visa can be established at the French consulate, if necessary.

BEFORE THE STAY

The preparation of the hospitalization in the establishment of the non-resident foreign patient is ensured upstream by the medical-administrative team that will take charge of the patient.

After studying the patient's file, the medical team gives its approval for hospitalization, if necessary, and communicates the patient's hospitalization program.

The Cardiology department provides the patient with an estimate. This estimate is made on the basis of the information provided by the patient, and is likely to change as a result of the treatment.

Care is scheduled within a reasonable timeframe, considering the complexity of the treatment.

The medical team informs the patient of the special precautions to be taken after hospitalization.

The hospital guarantees the security of exchanges and the confidentiality of data.

DURING THE STAY

On the patient's arrival, the administrative formalities related to his care are carried out in conjunction with the cardiology department.

The medical team undertakes to provide the patient with clear and comprehensible information about his hospitalization and throughout his stay.

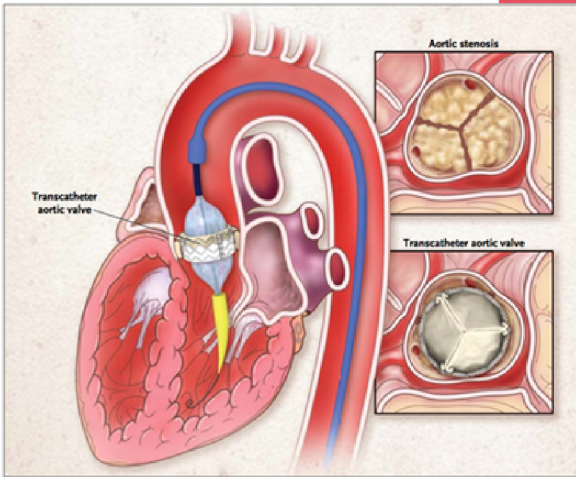
It ensures that the patient consents to care in an informed manner, with the possible support of an interpreter.

The establishment undertakes to provide a single room with the possibility of accommodating an accompanying person. This room has a toilet with a shower, a telephone, Wi-Fi access and a television with access to international channels. Dietary preferences can be communicated to the service in advance.



AFTER THE STAY

The medical team undertakes to provide the patient with a medical report of his or her stay within a period not exceeding eight days and in English if necessary.



EXPLANATION OF THE TAVI PROCEDURE

The procedure consists of, in patients with aortic narrowing:

- - implanting a new aortic valve inside the affected valve
- - by trans-femoral approach (puncture at the level of the groin)
- - under local anesthesia and sedation (no general anesthesia)

Follow-up is usually simple with early discharge of patients and resumption of normal activity.

Potential complications are rare (bleeding at the puncture site, stroke, need for Pacemaker implantation, death). Clear and detailed information will be delivered during the initial consultation.

IMPORTANT INFORMATION

- The implantation of a TAVI prosthesis (foreign object) is associated with a small but not "zero risk" of infection of the implanted prosthesis (endocarditis) at a distance from the procedure, potentially related to infectious foci at the dental level.

For logistical reasons, dental care should be organized by the patient before the procedure, ideally, or after the procedure, in order to eradicate potential infectious sites.

- The TAVI procedure has been simplified as much as possible and most of the time allows a quick discharge of the patients. However, conductive disorders observed on the electrocardiogram may occur secondarily after TAVI and justify the implantation of a pacemaker in the days following the procedure, thus extending the duration of hospitalization.

The estimate considers the patient's prior risk (assessed on his or her initial ECG) in order to anticipate possible additional costs related to pacemaker implantation.



Do not hesitate to contact us to discuss the possibilities of care that the University Hospital of La Reunion can offer to your patients.



Contacts of referring physician :

Fax : 0262 90 67 59
Mail : sec.cardiologie.fguyon@chu-reunion.fr



Dr Thomas CHOLLET
Mail : thomas.chollet@chu-reunion.fr



Dr Philippe BOIRON
Mail : philippe.boiron@chu-reunion.fr